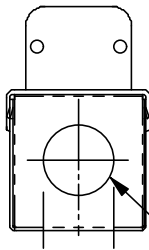


FIXTURE MAY BE INSTALLED ON ANY ANGLE



END VIEW

1/2" CONDUIT INLET, BOTH ENDS

X	Check Appropriate Box		
Fixture	P/N	Length	
115 Vdc	10000200	As Shown	
208/230	10000600	As Shown	

NOTES:

1. UNIT SHIPPED WITH LAMP INSTALLED (DO NOT TOUCH GLASS)
2. REPLACEMENT UVC EMITTER, MODEL GTD 22 VO, PART NO. 20000200
3. CONSTRUCTED OF HOSPITAL GRADE STAINLESS STEEL & SPECULAR ALUMINUM
4. PRE-PUNCHED MOUNTING HOLES, USE #10 SCREWS, 4 REQD
5. INSTALLED WEIGHT 2.2 LBS.
6. ELECTRICAL REQUIREMENTS: 50/60 HZ - 72 WATTS
7. USE INTERLOCK ON ACCESS DOOR
8. UL & CSA LISTED

CAUTION PROTECT EYES AND SKIN - TURN UNITS OFF FOR SERVICE

A	11/30	FIRST ISSUE	RMC
	98		
REV	DATE	WT.	
NEXT ASSY			
SALES DRAWING 24" DOUBLE ENDED FIXTURE & EMITTER MODEL DE 241 VO			
		DRAWING NO.	REV.
		9811302	A