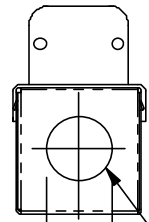
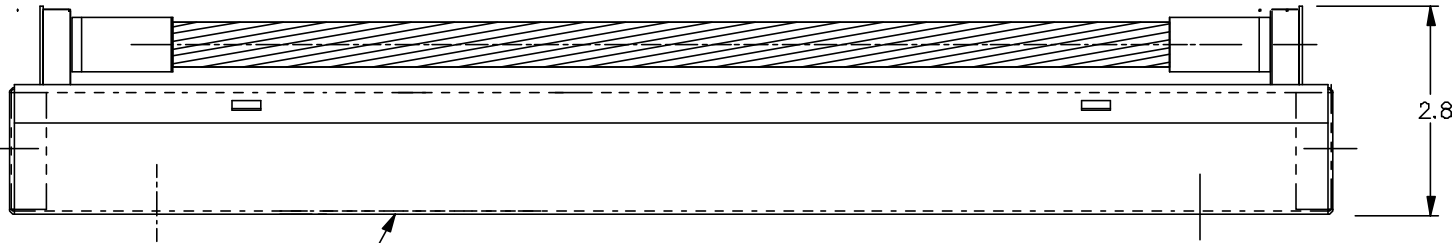


17.75



1.81

END VIEW



2.81

1/2" CONDUIT INLET, BOTH ENDS. FIXTURE MAY BE INSTALLED ON ANY ANGLE

X	Check Appropriate Box		
Fixture	P/N	Length	
115 Vac	10000100	As Shown	
208/230	10000500	As Shown	

NOTES:

1. UNIT SHIPPED WITH LAMP INSTALLED (DO NOT TOUCH GLASS)
2. REPLACEMENT UVC EMITTER, MODEL GTD 16 VO, PART NO. 20000100
3. CONSTRUCTED OF HOSPITAL GRADE STAINLESS STEEL & SPECULAR ALUMINUM
4. PRE-PUNCHED MOUNTING HOLES, USE #10 SCREWS, 4 REQD
5. INSTALLED WEIGHT 2 LBS.
6. ELECTRICAL REQUIREMENTS: 50/60 HZ - 65 WATTS
7. USE INTERLOCK ON ACCESS DOOR
8. UL & CSA LISTED

CAUTION PROTECT EYES AND SKIN - TURN UNITS OFF FOR SERVICE

A	11/30/98	FIRST ISSUE	RMC
REV	DATE		DFT
NEXT ASSY			WT.
SALES DRAWING 18" DOUBLE ENDED FIXTURE & EMITTER MODEL DE 181 VO			
DRAWING NO.		REV.	
STERILSAIRE		A	
9811301			