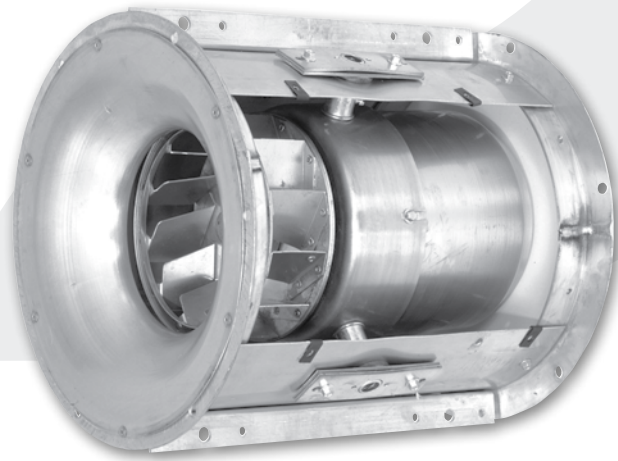




REX08



CENTREX

Model: REX
Centrifugal Inline Fan
Tubular Direct Drive and Belt Drive

MOVING YOUR WAY

› **Centrex REX**

Model: REX Direct Drive

- Static pressure up to 1.5 in. wg.
- Belt Drive - Flow capacity up to 2,290 CFM

Model: REX Belt Drive

- Static pressure up to 3.0 in. wg.
- Belt Drive - Flow capacity up to 22,054 CFM



Introduction.....2

Direct Drive Fan Performance.....3

Belt Drive Fan Performance.....4

Engineering Specifications.....11

Limited Warranty.....12

› **AMCA Certification**

PennBarry certifies that the Centrex models shown on pages 3 and 5 - 10 contained herein are licensed to bear the AMCA Seal. The ratings shown are based on tests and procedures performed in accordance with AMCA Publication 211 and AMCA Publication 311 and comply with the requirements of the AMCA Certified Ratings Program



› **CSA Certifications**

Centrex fans are certified by the Canadian Standard Association (File #LR13309).

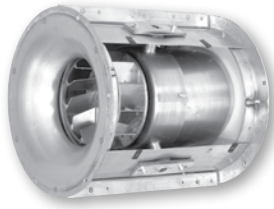


PennBarry reserves the right to make changes at any time, without notice, to models, construction, specifications, options, availability, etc. This bulletin illustrates the appearance of PennBarry products at the time of publication. To view the latest updates, visit PennBarry at www.pennbarry.com.

Features, Benefits, Options & Accessories

› Direct Drive Application

The direct drive Centrex is available in sizes from 8 through 12 to deliver from 75 CFM to 2290 CFM. Nationally known motors are available in all speeds as well as optional multi-speed, totally enclosed motors. The direct drive Centrex features motor compartment cooling to prolong motor life. Vanes on the motor housing serve as a heat sink and assist in dissipating any heat build-up. The entire operating assembly is floated on tubular supports. Efficient aluminum, backward inclined wheels and aerodynamic straightening vanes (size REX10 and larger) give the Centrex a quiet efficiency unmatched by competitive models.



› Safety Disconnect Switch

Safety disconnect switches are available to allow positive electrical shut-off and safety. Wiring is only run from the motor to the junction box. (Factory wiring of explosion proof applications is not available.) A wide range of NEMA rated enclosures with disconnect switches are available for indoor, outdoor, and explosion proof installations. Disconnects are to be field wired by a licensed electrician.

› Variable Inlet Vanes

Variable inlet vanes are available to provide the efficient regulation of fan output over all operating ranges. These vanes provide substantial increases in energy efficiency during times when full fan output is not necessary. Both manual and automatic operation are available.

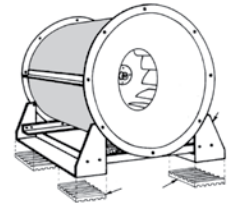
› Belt Drive Application

Sizes from 12 through 36 are available in the belt drive Centrex. Belt drive models provide an almost infinite variation of capacity across the entire range of operation. Motors and drive pulleys are mounted on the Centrex exterior so they are readily accessible. Adjustable pitch pulleys are standard, for speed and capacity adjustment on the spot. Aerodynamic straightening vanes provide extra high efficiency operation in the larger sizes.



› Aluminum Wheels

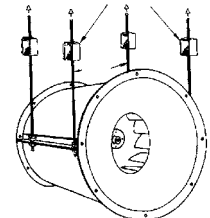
The “heart” of the Centrex exhauster is its aluminum wheel. The wheel construction is spark-proof and non-corroding, and produces reduced motor starting torque and long bearing life. In sizes, REX08, REX10 and REX12, specially designed high volume wheels are provided. All testing and rating is done in an AMCA approved laboratory.



Optional Flex Pads and Support Legs

› Support Legs

Securely bolted to casing rings providing stable method for supporting blower unit from the ceiling, floor, or wall. Legs are to be fastened to the fan casing in the field.



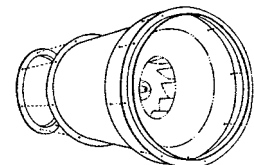
Hanger Rods

› Support Angles

Fastened to the casing and designed for horizontal blower suspension from rod hangers. Vibration hangers are recommended.

› Companion Angle Rings

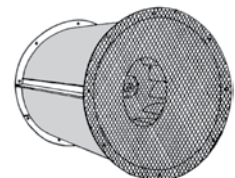
An extra pair of companion angle rings is available for use on duct work when the Centrex is connected to a duct by a transition section. The angle rings fit the fan to the transitions and guarantee proper sizing.



Companion Angle Rings

› Fan Guards

Inlet guards or discharge guards are available when required. Such safety guards are made of expanded metal attached to the fan casing. Front and rear guards are recommended whenever the fan is mounted within 7 feet of an occupied space (OSHA requirements) and otherwise unprotected (by duct work, for example).

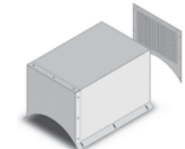
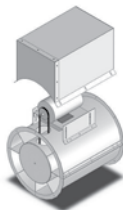


Fan Guards

An extra deep spun inlet venturi mates with a spun bottom wheel inlet plate. This smooth inlet condition assures high capacity even at higher static pressures. The Centrex inlet was actually patterned after the calibrated nozzles specified by AMCA for air movement testing. All of these design features, coupled with low outlet velocities, mean low operating noise levels with smooth, efficient airflow.

› Weather Covers

Illustrated to the right is the complete motor and drive cover for belt-driven units. These are optional accessories and are available to provide safe operating conditions where dictated.

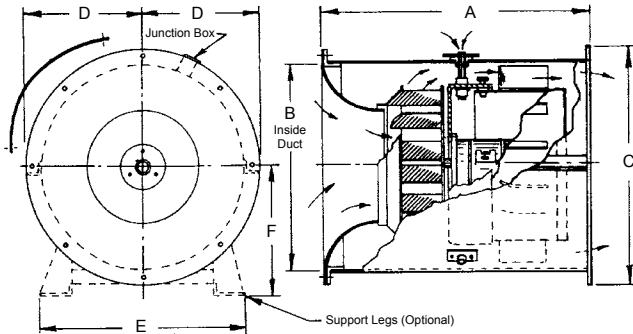


Shown to the left is the optional totally enclosed motor and drive cover. This motor and drive cover can serve as an OSHA belt guard.

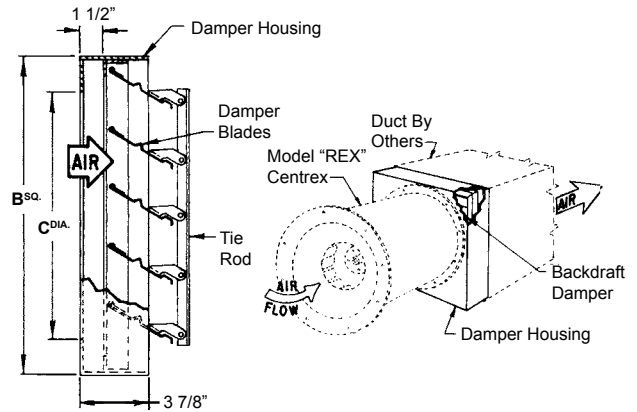
› Other Options

Various other optional items are available when required. Where the support legs are used, heavy duty neoprene vibration flex pads are available in 6” x 6” size. Where the angle support feature is used for ceiling suspension, hanger-type vibration eliminators featuring rubber-in-shear mounts are available. Canvas connectors, duct transition, anchors and hanger rods are normally furnished by others.

› Direct Drive Fan Dimensional Data



› Damper Dimensional Data



› Direct Drive Fan Dimensional References

| MODEL | A | B | C | D | E | F | SHIP WT. |
|-------|--------|--------|--------|----------|--------|--------|----------|
| REX08 | 16 1/2 | 12 7/8 | 15 5/8 | 7 13/16 | 13 1/2 | 9 1/4 | 25 |
| REX10 | 21 | 14 1/2 | 17 1/4 | 8 5/8 | 21 1/4 | 11 3/8 | 35 |
| REX12 | 22 | 19 | 21 3/8 | 10 11/16 | 23 1/2 | 13 3/8 | 50 |

All dimensions are in inches.

› Damper Dimensional Reference

| DIRECT | BELT | B^{SQ.} | C^{DIA.} |
|--------|--------|-----------------|------------------|
| REX08 | - | 16 1/4 | 12 7/8 |
| REX10 | - | 20 | 14 1/2 |
| REX12 | REX12B | 22 1/2 | 19 |
| - | REX14B | 28 | 23 |
| - | REX20B | 30 3/4 | 27 3/4 |
| - | REX22B | 35 3/4 | 33 1/4 |
| - | REX27B | 43 3/4 | 40 1/2 |
| - | REX33B | 54 3/4 | 49 1/2 |

All direct driven Centrex units are pre-wired at the factory.

› Lek-Trol™ Speed Controller

PennBarry's solid state Lek-Trol™ lets you "tune-in" to the precise air volume needed. Adjust fan speed with a turn of the dial. Attractive, variable speed switch provides ON-OFF control and permits air movement adjustment from 100% of capacity to 50%. Lek-Trols are available for use with direct drive Centrex units.

| Model LT30 (2.5 Amps) (115/1/50-60) | Model LT40 (10 Amps) (115/1/50-60) | Model LT50 (6 Amps) (115/1/50-60) | Model LT35 (5 Amps) (230/1/50-60) |
|--------------------------------------------|---------------------------------------|--------------------------------------|--------------------------------------|
| REX08V REX08R, REX08Q, REX10V REX10T | REX10Q REX12Q | REX12T | REX12Q |

› Direct Drive Fan Performance Data

| MODEL | RPM | TIP SPEED FPM | OUTLET AREA (SQ. FT.) | HP | MAX BHP | FAN CAPACITY - CUBIC FEET PER MINUTE (CFM) | | | | | | | | | | | | |
|--------|------|---------------|-----------------------|------|---------|--------------------------------------------|-------------|-------------|-------------|-------------|-------------|-------------|-------------|-------------|-------------|-------------|-------------|-------------|
| | | | | | | 0.000" S.P. | 0.125" S.P. | 0.250" S.P. | 0.375" S.P. | 0.500" S.P. | 0.625" S.P. | 0.750" S.P. | 0.875" S.P. | 1.000" S.P. | 1.125" S.P. | 1.250" S.P. | 1.375" S.P. | 1.500" S.P. |
| REX08V | 1050 | 2270 | 0.902 | 1/25 | 0.01 | 320 | 170 | - | - | - | - | - | - | - | - | - | - | - |
| REX08T | 1140 | 2470 | | 1/12 | 0.02 | 345 | 210 | 75 | - | - | - | - | - | - | - | - | - | - |
| REX08R | 1550 | 3350 | | 1/25 | 0.04 | 470 | 380 | 270 | 185 | - | - | - | - | - | - | - | - | - |
| REX08Q | 1750 | 3780 | | 1/12 | 0.06 | 530 | 455 | 350 | 265 | 195 | - | - | - | - | - | - | - | - |
| REX10V | 1050 | 3020 | 1.15 | 1/12 | 0.04 | 645 | 545 | 435 | 310 | - | - | - | - | - | - | - | - | - |
| REX10T | 1140 | 3280 | | 1/12 | 0.05 | 700 | 625 | 520 | 415 | - | - | - | - | - | - | - | - | - |
| REX10Q | 1750 | 5050 | 1.97 | 1/4 | 0.18 | 1070 | 1000 | 950 | 900 | 845 | 775 | 695 | 635 | 550 | 235 | - | - | - |
| REX12V | 1050 | 3710 | | 1/6 | 0.14 | 1375 | 1170 | 955 | 670 | 415 | - | - | - | - | - | - | - | - |
| REX12T | 1140 | 4030 | | 1/4 | 0.18 | 1495 | 1300 | 1125 | 850 | 620 | 365 | - | - | - | - | - | - | - |
| REX12Q | 1750 | 6185 | | 3/4 | 0.64 | 2290 | 2140 | 2030 | 1925 | 1810 | 1685 | 1500 | 1320 | 1165 | 1015 | 865 | 705 | 515 |

Performance shown is for installation type A - Free inlet, Free outlet. Performance ratings do not include the effects of appurtenances in the airstream. S.P. figures are external pressures (0.000" S.P. includes all internal fan losses). The AMCA Certified Ratings Seal applies to air capacities only. Variable speeds for direct drive models can be obtained by using the Lek-Trol™ solid state speed controller for single phase.

Belt Drive Losses

Centrifugal Tubular Fans

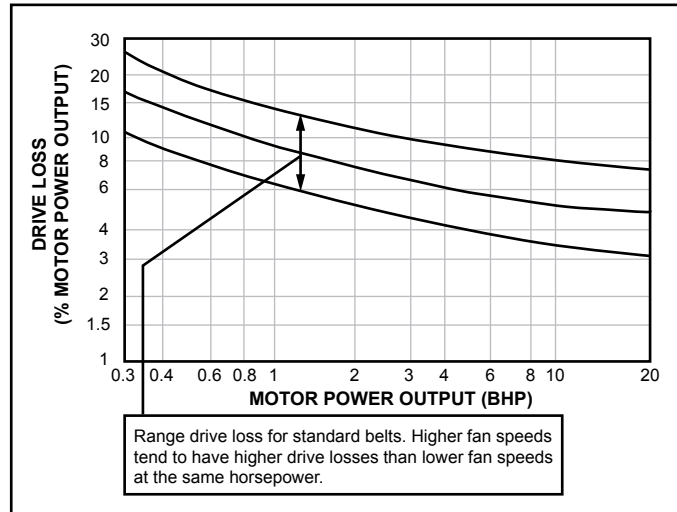


Belt Drive
Centrex REX

› Estimated Belt Drive Losses

The AMCA 203 Review Committee has developed the chart shown here for the purpose of estimating belt drive losses. To calculate total BHP (including drive losses): Find the BHP of your operating point on the X-Axis of the chart. Follow the vertical line to the lines indicating the range of drive losses. Look at the Y-Axis on the left and find the drive loss percentage. Calculate the total BHP by adding the drive loss percentage to the operating point BHP. For BHP's below .3, use 30%.

› Drive Loss Reference Chart



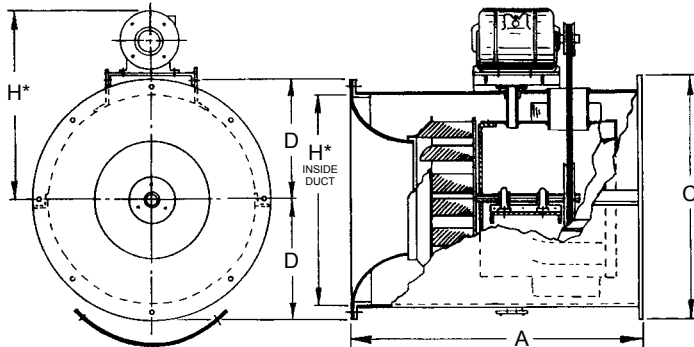
! For totally enclosed, explosion proof, multi-speed and all 1.0 Service Factor motors, fan BHP plus drive losses should not exceed motor rated HP.

Graph reprinted from AMCA publication 203, with the express written permission from the Air Movement and Control Association, Inc., 30 West University Drive, Arlington Heights, IL 60004-1983.

C
e
n
t
r
e
x

R
E
X

› REX12B Dimensional Data



› REX12B Dimensional References

| MODEL | A | B | C | D | E | F | H* | APPROXIMATE SHIP WEIGHT (LBS.) |
|--------|----|----|--------|----------|--------|--------|----------|--------------------------------|
| REX12B | 23 | 19 | 21 3/8 | 10 11/16 | 23 1/2 | 13 3/8 | 23 11/16 | 72 |

*Maximum for open motors and highest HP available for that size. All dimensions in inches.

| WHEEL SIZE | INLET AND OUTLET | TIP SPEED |
|--------------------------------------------|---------------------------------------------------------|------------|
| Diameter = 13.50" Circumference = 3.53' | Inside Diameter = 19" Fan Outlet Area = 1.97 sq. ft. | 3.53 x RPM |

› REX12B Performance Data

| RPM | FAN CAPACITY - CUBIC FEET PER MINUTE (CFM) | | | | | | | | | | | | | | | | | |
|------|--------------------------------------------|------|-------------|------|-------------|------|-------------|------|-------------|------|-------------|------|-------------|------|-------------|------|-------------|------|
| | 0.000" S.P. | | 0.125" S.P. | | 0.250" S.P. | | 0.375" S.P. | | 0.500" S.P. | | 0.625" S.P. | | 0.750" S.P. | | 0.875" S.P. | | 1.000" S.P. | |
| | CFM | BHP | CFM | BHP | CFM | BHP | CFM | BHP | CFM | BHP | CFM | BHP | CFM | BHP | CFM | BHP | CFM | BHP |
| 800 | 1035 | 0.07 | 810 | 0.07 | 500 | 0.06 | - | - | - | - | - | - | - | - | - | - | - | - |
| 1020 | 1320 | 0.14 | 1155 | 0.14 | 955 | 0.14 | 710 | 0.13 | 350 | 0.09 | - | - | - | - | - | - | - | - |
| 1040 | 1345 | 0.15 | 1185 | 0.15 | 990 | 0.14 | 755 | 0.13 | 425 | 0.10 | - | - | - | - | - | - | - | - |
| 1300 | 1680 | 0.30 | 1560 | 0.29 | 1415 | 0.29 | 1255 | 0.28 | 1085 | 0.27 | 880 | 0.25 | 625 | 0.21 | 200 | 0.14 | - | - |
| 1320 | 1705 | 0.31 | 1585 | 0.31 | 1450 | 0.30 | 1290 | 0.29 | 1125 | 0.29 | 925 | 0.27 | 685 | 0.23 | 315 | 0.16 | - | - |
| 1370 | 1770 | 0.35 | 1653 | 0.34 | 1525 | 0.34 | 1375 | 0.33 | 1215 | 0.32 | 1040 | 0.31 | 825 | 0.28 | 540 | 0.23 | - | - |
| 1420 | 1835 | 0.38 | 1720 | 0.38 | 1600 | 0.38 | 1454 | 0.37 | 1310 | 0.36 | 1150 | 0.35 | 950 | 0.33 | 725 | 0.29 | 385 | 0.21 |
| 1530 | 1980 | 0.48 | 1875 | 0.48 | 1760 | 0.48 | 1635 | 0.47 | 1500 | 0.46 | 1355 | 0.45 | 1205 | 0.44 | 1020 | 0.41 | 810 | 0.37 |
| 1600 | 2070 | 0.55 | 1970 | 0.55 | 1865 | 0.54 | 1745 | 0.54 | 1615 | 0.53 | 1485 | 0.52 | 1345 | 0.51 | 1175 | 0.49 | 995 | 0.45 |
| 1670 | 2160 | 0.63 | 2065 | 0.62 | 1965 | 0.62 | 1855 | 0.62 | 1730 | 0.61 | 1605 | 0.59 | 1475 | 0.59 | 1340 | 0.57 | 1170 | 0.55 |
| 1900 | 2455 | 0.92 | 2385 | 0.92 | 2285 | 0.92 | 2195 | 0.91 | 2100 | 0.91 | 1985 | 0.90 | 1880 | 0.88 | 1770 | 0.87 | 1650 | 0.86 |
| 1960 | 2535 | 1.01 | 2465 | 1.01 | 2370 | 1.00 | 2285 | 1.00 | 2190 | 1.00 | 2085 | 0.99 | 1980 | 0.97 | 1875 | 0.96 | 1760 | 0.95 |

| RPM | FAN CAPACITY - CUBIC FEET PER MINUTE (CFM) | | | | | | | | | | | | | | | | | |
|------|--------------------------------------------|------|-------------|------|-------------|------|-------------|------|-------------|------|-------------|------|-------------|------|-------------|------|-------------|-----|
| | 1.125" S.P. | | 1.250" S.P. | | 1.375" S.P. | | 1.500" S.P. | | 1.625" S.P. | | 1.750" S.P. | | 1.875" S.P. | | 2.000" S.P. | | 2.125" S.P. | |
| | CFM | BHP | CFM | BHP | CFM | BHP | CFM | BHP | CFM | BHP | CFM | BHP | CFM | BHP | CFM | BHP | CFM | BHP |
| 1530 | 520 | 0.29 | - | - | - | - | - | - | - | - | - | - | - | - | - | - | - | - |
| 1600 | 790 | 0.40 | 485 | 0.32 | - | - | - | - | - | - | - | - | - | - | - | - | - | - |
| 1670 | 995 | 0.51 | 775 | 0.42 | 470 | 0.35 | - | - | - | - | - | - | - | - | - | - | - | - |
| 1900 | 1530 | 0.84 | 1380 | 0.81 | 1230 | 0.78 | 1075 | 0.73 | 870 | 0.65 | 615 | 0.55 | 280 | 0.42 | - | - | - | - |
| 1960 | 1650 | 0.93 | 1520 | 0.92 | 1375 | 0.88 | 1220 | 0.84 | 1060 | 0.78 | 860 | 0.69 | 600 | 0.59 | 275 | 0.46 | - | - |

Performance shown is for installation type A - Free inlet, Free outlet. Power rating (BHP) does not include drive losses. Performance ratings do not include the effects of appurtenances in the airstream. The AMCA Certified Ratings Seal applies to air capacities only.

Dimensional Information & Performance Data

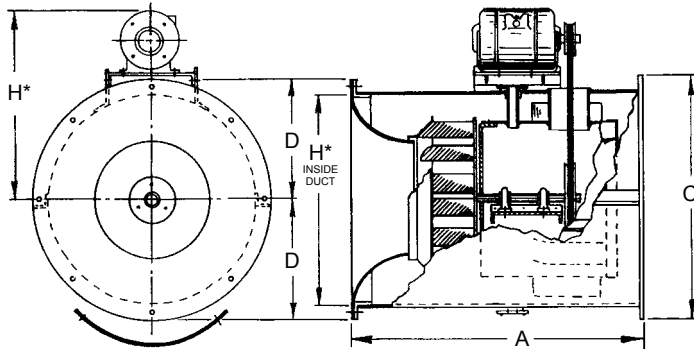
Centrex REX | Belt Drive



REX14B

› REX14B Dimensional Data

Centrifugal Tubular Fans



› REX14B Dimensional References

| MODEL | A | B | C | D | E | F | H* | APPROXIMATE SHIP WEIGHT (LBS.) |
|--------|----|----|--------|----------|--------|--------|--------|--------------------------------|
| REX14B | 25 | 23 | 25 3/8 | 12 11/16 | 25 1/2 | 15 1/8 | 25 1/2 | 98 |

*Maximum for open motors and highest HP available for that size. All dimensions in inches.

| WHEEL SIZE | INLET AND OUTLET | TIP SPEED |
|--------------------------------------------|---------------------------------------------------------|------------|
| Diameter = 16.50" Circumference = 3.53' | Inside Diameter = 23" Fan Outlet Area = 2.88 sq. ft. | 4.30 x RPM |

› REX14B Performance Data

| RPM | FAN CAPACITY - CUBIC FEET PER MINUTE (CFM) | | | | | | | | | | | | | | | | | |
|------|--------------------------------------------|------|-------------|------|-------------|------|-------------|------|-------------|------|-------------|------|-------------|------|-------------|------|-------------|------|
| | 0.125" S.P. | | 0.250" S.P. | | 0.375" S.P. | | 0.500" S.P. | | 0.625" S.P. | | 0.750" S.P. | | 0.875" S.P. | | 1.000" S.P. | | 1.125" S.P. | |
| | CFM | BHP | CFM | BHP | CFM | BHP | CFM | BHP | CFM | BHP | CFM | BHP | CFM | BHP | CFM | BHP | CFM | BHP |
| 925 | 1815 | 0.25 | 1505 | 0.22 | 1105 | 0.19 | 825 | 0.17 | 520 | 0.16 | - | - | - | - | - | - | - | - |
| 1000 | 2000 | 0.32 | 1740 | 0.29 | 1370 | 0.25 | 1050 | 0.22 | 820 | 0.21 | 510 | 0.20 | - | - | - | - | - | - |
| 1075 | 2185 | 0.40 | 1950 | 0.37 | 1655 | 0.34 | 1300 | 0.30 | 1040 | 0.27 | 825 | 0.26 | 535 | 0.25 | - | - | - | - |
| 1150 | 2370 | 0.50 | 2155 | 0.47 | 1900 | 0.43 | 1565 | 0.39 | 1275 | 0.35 | 1065 | 0.33 | 845 | 0.32 | 560 | 0.31 | - | - |
| 1225 | 2550 | 0.60 | 2355 | 0.57 | 2130 | 0.54 | 1850 | 0.49 | 1530 | 0.45 | 1285 | 0.41 | 1095 | 0.39 | 890 | 0.38 | 620 | 0.38 |
| 1300 | 2730 | 0.73 | 2545 | 0.69 | 2345 | 0.66 | 2105 | 0.62 | 1800 | 0.57 | 1535 | 0.52 | 1315 | 0.48 | 1140 | 0.47 | 945 | 0.46 |
| 1375 | 2910 | 0.86 | 2735 | 0.83 | 2550 | 0.79 | 2345 | 0.75 | 2085 | 0.70 | 1795 | 0.64 | 1560 | 0.60 | 1360 | 0.57 | 1200 | 0.55 |
| 1450 | 3085 | 1.02 | 2920 | 0.98 | 2750 | 0.94 | 2565 | 0.90 | 2345 | 0.85 | 2075 | 0.80 | 1810 | 0.74 | 1600 | 0.70 | 1420 | 0.66 |
| 1525 | 3260 | 1.19 | 3105 | 1.15 | 2945 | 1.11 | 2775 | 1.06 | 2580 | 1.02 | 2355 | 0.96 | 2085 | 0.90 | 1855 | 0.85 | 1655 | 0.81 |
| 1600 | 3435 | 1.38 | 3285 | 1.33 | 3135 | 1.29 | 2980 | 1.25 | 2805 | 1.20 | 2605 | 1.15 | 2370 | 1.09 | 2110 | 1.02 | 1910 | 0.98 |
| 1660 | 3575 | 1.54 | 3430 | 1.50 | 3285 | 1.45 | 3140 | 1.41 | 2975 | 1.36 | 2795 | 1.31 | 2590 | 1.23 | 2345 | 1.19 | 2110 | 1.12 |
| 1750 | 3780 | 1.81 | 3650 | 1.76 | 3510 | 1.72 | 3370 | 1.67 | 3225 | 1.62 | 3070 | 1.57 | 2885 | 1.52 | 2680 | 1.45 | 2445 | 1.38 |

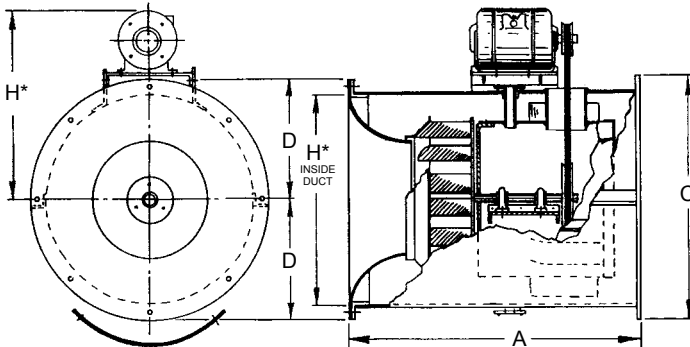
| RPM | FAN CAPACITY - CUBIC FEET PER MINUTE (CFM) | | | | | | | | | | | | | | | | | |
|------|--------------------------------------------|------|-------------|------|-------------|------|-------------|------|-------------|------|-------------|------|-------------|------|-------------|------|-------------|------|
| | 1.250" S.P. | | 1.375" S.P. | | 1.500" S.P. | | 1.625" S.P. | | 1.750" S.P. | | 1.875" S.P. | | 2.000" S.P. | | 2.250" S.P. | | 2.500" S.P. | |
| | CFM | BHP | CFM | BHP | CFM | BHP | CFM | BHP | CFM | BHP | CFM | BHP | CFM | BHP | CFM | BHP | CFM | BHP |
| 1300 | 690 | 0.45 | 355 | 0.42 | - | - | - | - | - | - | - | - | - | - | - | - | - | - |
| 1375 | 1015 | 0.54 | 785 | 0.54 | 485 | 0.51 | - | - | - | - | - | - | - | - | - | - | - | - |
| 1450 | 1265 | 0.65 | 1095 | 0.64 | 880 | 0.63 | 625 | 0.61 | - | - | - | - | - | - | - | - | - | - |
| 1525 | 1485 | 0.77 | 1340 | 0.75 | 1180 | 0.74 | 985 | 0.73 | 765 | 0.72 | 460 | 0.68 | - | - | - | - | - | - |
| 1600 | 1720 | 0.93 | 1560 | 0.89 | 1420 | 0.87 | 1275 | 0.86 | 1095 | 0.85 | 895 | 0.84 | 645 | 0.81 | - | - | - | - |
| 1660 | 1915 | 1.07 | 1745 | 1.02 | 1605 | 0.99 | 1465 | 0.97 | 1320 | 0.96 | 1150 | 0.95 | 955 | 0.94 | 420 | 0.86 | - | - |
| 1750 | 2225 | 1.31 | 2040 | 1.26 | 1875 | 1.20 | 1725 | 1.17 | 1605 | 1.15 | 1465 | 1.13 | 1325 | 1.12 | 965 | 1.01 | 445 | 1.00 |

Performance shown is for installation type A - Free inlet, Free outlet. Power rating (BHP) does not include drive losses. Performance ratings do not include the effects of appurtenances in the airstream. The AMCA Certified Ratings Seal applies to air capacities only.

Centrex REX

©PENNBARRY 2008

› REX20B Dimensional Data



› REX20B Dimensional References

| MODEL | A | B | C | D | E | F | H* | APPROXIMATE SHIP WEIGHT (LBS.) |
|--------|----|--------|--------|---------|----|--------|----|--------------------------------|
| REX20B | 30 | 27 3/4 | 30 1/8 | 15 1/16 | 34 | 16 5/8 | 29 | 167 |

*Maximum for open motors and highest HP available for that size. All dimensions in inches.

| WHEEL SIZE | INLET AND OUTLET | TIP SPEED |
|-----------------------------------------|------------------------------------------------------------|------------|
| Diameter = 20" Circumference = 5.23' | Inside Diameter = 27.75" Fan Outlet Area = 4.20 sq. ft. | 5.23 x RPM |

› REX20B Performance Data

| RPM | FAN CAPACITY - CUBIC FEET PER MINUTE (CFM) | | | | | | | | | | | | | | | | | |
|------|--------------------------------------------|------|-------------|------|-------------|------|-------------|------|-------------|------|-------------|------|-------------|------|-------------|------|-------------|------|
| | 0.125" S.P. | | 0.250" S.P. | | 0.375" S.P. | | 0.500" S.P. | | 0.625" S.P. | | 0.750" S.P. | | 0.875" S.P. | | 1.000" S.P. | | 1.125" S.P. | |
| | CFM | BHP | CFM | BHP | CFM | BHP | CFM | BHP | CFM | BHP | CFM | BHP | CFM | BHP | CFM | BHP | CFM | BHP |
| 705 | 2563 | 0.26 | 2275 | 0.27 | 1775 | 0.25 | 1330 | 0.24 | - | - | - | - | - | - | - | - | - | - |
| 770 | 2850 | 0.34 | 2586 | 0.35 | 2226 | 0.34 | 1739 | 0.32 | 1304 | 0.29 | - | - | - | - | - | - | - | - |
| 875 | 3306 | 0.50 | 3069 | 0.51 | 2851 | 0.51 | 2504 | 0.50 | 2038 | 0.47 | 1723 | 0.45 | - | - | - | - | - | - |
| 945 | 3606 | 0.63 | 3391 | 0.65 | 3176 | 0.65 | 2909 | 0.64 | 2568 | 0.62 | 2142 | 0.59 | 1851 | 0.57 | 777 | 0.32 | - | - |
| 1000 | 3840 | 0.75 | 3639 | 0.76 | 3429 | 0.80 | 3235 | 0.76 | 2910 | 0.75 | 2531 | 0.73 | 2190 | 0.70 | 1904 | 0.68 | - | - |
| 1050 | 4052 | 0.86 | 3859 | 0.88 | 3659 | 0.89 | 3491 | 0.88 | 3213 | 0.87 | 2921 | 0.86 | 2515 | 0.83 | 2224 | 0.80 | 1918 | 0.78 |
| 1110 | 4305 | 1.02 | 4123 | 1.04 | 3935 | 1.05 | 3754 | 1.06 | 3571 | 1.05 | 3277 | 1.03 | 2977 | 1.01 | 2602 | 0.97 | 2336 | 0.95 |
| 1185 | 4619 | 1.20 | 4449 | 1.26 | 4278 | 1.27 | 4100 | 1.28 | 3937 | 1.28 | 3724 | 1.26 | 3454 | 1.25 | 3171 | 1.23 | 2812 | 1.18 |
| 1270 | 4974 | 1.52 | 4815 | 1.54 | 4656 | 1.56 | 4490 | 1.57 | 4331 | 1.57 | 4200 | 1.57 | 3964 | 1.55 | 3712 | 1.54 | 3462 | 1.52 |
| 1385 | 5452 | 1.97 | 5307 | 1.99 | 5161 | 2.01 | 5015 | 2.03 | 4859 | 2.04 | 4716 | 2.00 | 4600 | 2.00 | 4400 | 2.02 | 4169 | 2.00 |
| 1480 | 5845 | 2.40 | 5709 | 2.43 | 5573 | 2.45 | 5436 | 2.46 | 5298 | 2.53 | 5152 | 2.49 | 5020 | 2.50 | 4914 | 2.50 | 4729 | 2.47 |
| 1580 | 6258 | 2.92 | 6131 | 2.95 | 6003 | 2.97 | 5875 | 2.99 | 5748 | 3.01 | 5615 | 3.03 | 5479 | 3.03 | 5356 | 3.03 | 5237 | 3.03 |

| RPM | FAN CAPACITY - CUBIC FEET PER MINUTE (CFM) | | | | | | | | | | | | | | | | | |
|------|--------------------------------------------|------|-------------|------|-------------|------|-------------|------|-------------|------|-------------|------|-------------|------|-------------|------|-------------|------|
| | 1.250" S.P. | | 1.375" S.P. | | 1.500" S.P. | | 1.750" S.P. | | 1.875" S.P. | | 2.000" S.P. | | 2.250" S.P. | | 2.500" S.P. | | 2.750" S.P. | |
| | CFM | BHP | CFM | BHP | CFM | BHP | CFM | BHP | CFM | BHP | CFM | BHP | CFM | BHP | CFM | BHP | CFM | BHP |
| 1110 | 2046 | 0.92 | 945 | 0.53 | - | - | - | - | - | - | - | - | - | - | - | - | - | - |
| 1185 | 2554 | 1.16 | 2322 | 1.13 | 1584 | 0.88 | - | - | - | - | - | - | - | - | - | - | - | - |
| 1270 | 3117 | 1.48 | 2838 | 1.44 | 2626 | 1.41 | 1395 | 0.93 | - | - | - | - | - | - | - | - | - | - |
| 1385 | 3967 | 1.98 | 3683 | 1.96 | 3368 | 1.91 | 2915 | 1.84 | 2726 | 1.80 | 2417 | 1.74 | - | - | - | - | - | - |
| 1480 | 4515 | 2.45 | 4296 | 2.43 | 4096 | 2.41 | 3523 | 2.31 | 3296 | 2.27 | 3114 | 2.25 | 2680 | 2.17 | - | - | - | - |
| 1580 | 5099 | 3.01 | 4910 | 2.99 | 4698 | 2.97 | 4330 | 2.92 | 4000 | 2.87 | 3752 | 2.81 | 3366 | 2.74 | 3003 | 2.68 | 1500 | 1.63 |

Performance shown is for installation type A - Free inlet, Free outlet. Power rating (BHP) does not include drive losses. Performance ratings do not include the effects of appurtenances in the airstream. The AMCA Certified Ratings Seal applies to air capacities only.

Dimensional Information & Performance Data

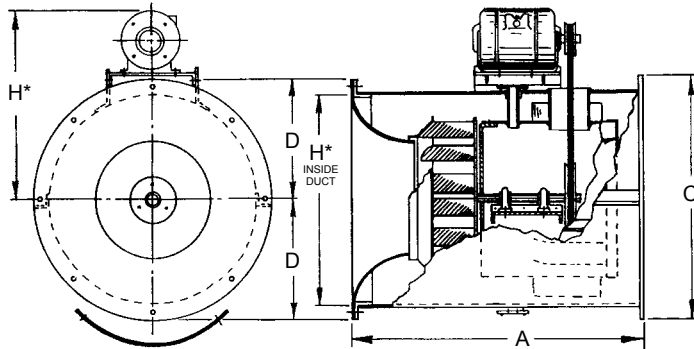
Centrex REX | Belt Drive



REX22B

› REX22B Dimensional Data

Centrifugal Tubular Fans



› REX22B Dimensional References

| MODEL | A | B | C | D | E | F | H* | APPROXIMATE SHIP WEIGHT (LBS.) |
|--------|----|--------|--------|----------|--------|--------|----|--------------------------------|
| REX22B | 32 | 33 1/4 | 35 5/8 | 17 13/16 | 37 3/4 | 18 5/8 | 33 | 175 |

*Maximum for open motors and highest HP available for that size. All dimensions in inches.

| WHEEL SIZE | INLET AND OUTLET | TIP SPEED |
|--------------------------------------------|------------------------------------------------------------|------------|
| Diameter = 24.50" Circumference = 6.41' | Inside Diameter = 33.25" Fan Outlet Area = 6.03 sq. ft. | 6.41 x RPM |

› REX22B Performance Data

| RPM | FAN CAPACITY - CUBIC FEET PER MINUTE (CFM) | | | | | | | | | | | | | | | | | |
|------|--------------------------------------------|------|-------------|------|-------------|------|-------------|------|-------------|------|-------------|------|-------------|------|-------------|------|-------------|------|
| | 0.125" S.P. | | 0.250" S.P. | | 0.375" S.P. | | 0.500" S.P. | | 0.625" S.P. | | 0.750" S.P. | | 0.875" S.P. | | 1.000" S.P. | | 1.125" S.P. | |
| | CFM | BHP | CFM | BHP | CFM | BHP | CFM | BHP | CFM | BHP | CFM | BHP | CFM | BHP | CFM | BHP | CFM | BHP |
| 590 | 3372 | 0.38 | 2910 | 0.38 | 2313 | 0.36 | 1498 | 0.31 | - | - | - | - | - | - | - | - | - | - |
| 655 | 3821 | 0.52 | 3437 | 0.52 | 2968 | 0.51 | 2367 | 0.49 | 1592 | 0.41 | - | - | - | - | - | - | - | - |
| 745 | 4430 | 0.75 | 4116 | 0.76 | 3757 | 0.76 | 3322 | 0.75 | 2801 | 0.72 | 2158 | 0.66 | - | - | - | - | - | - |
| 765 | 4564 | 0.82 | 4264 | 0.83 | 3922 | 0.83 | 3505 | 0.82 | 3021 | 0.79 | 2437 | 0.74 | 1685 | 0.62 | - | - | - | - |
| 835 | 5031 | 1.06 | 4774 | 1.07 | 4461 | 1.08 | 4121 | 1.07 | 3735 | 1.06 | 3278 | 1.03 | 2742 | 0.98 | 2128 | 0.88 | - | - |
| 900 | 5461 | 1.32 | 5224 | 1.34 | 4949 | 1.35 | 4658 | 1.35 | 4316 | 1.34 | 3945 | 1.32 | 3521 | 1.29 | 3023 | 1.23 | 2465 | 1.14 |
| 965 | 5888 | 1.63 | 5667 | 1.65 | 5428 | 1.66 | 5157 | 1.66 | 4877 | 1.66 | 4544 | 1.65 | 4189 | 1.63 | 3794 | 1.59 | 3336 | 1.53 |
| 1010 | 6183 | 1.86 | 5972 | 1.88 | 5755 | 1.90 | 5496 | 1.90 | 5237 | 1.90 | 4938 | 1.89 | 4620 | 1.88 | 4259 | 1.85 | 3882 | 1.82 |
| 1060 | 6510 | 2.15 | 6308 | 2.17 | 6107 | 2.19 | 5868 | 2.20 | 5622 | 2.20 | 5367 | 2.20 | 5064 | 2.18 | 4760 | 2.17 | 4403 | 2.13 |
| 1130 | 6965 | 2.60 | 6777 | 2.63 | 6588 | 2.65 | 6382 | 2.66 | 6151 | 2.66 | 5920 | 2.67 | 5670 | 2.66 | 5385 | 2.65 | 5101 | 2.63 |
| 1210 | 7484 | 3.19 | 7308 | 3.22 | 7132 | 3.24 | 6955 | 3.27 | 6745 | 3.27 | 6529 | 3.27 | 6313 | 3.27 | 6079 | 3.27 | 5813 | 3.25 |
| 1300 | 8066 | 3.96 | 7902 | 3.98 | 7738 | 4.01 | 7574 | 4.03 | 7402 | 4.05 | 7201 | 4.06 | 6999 | 4.06 | 6798 | 4.06 | 6589 | 4.06 |

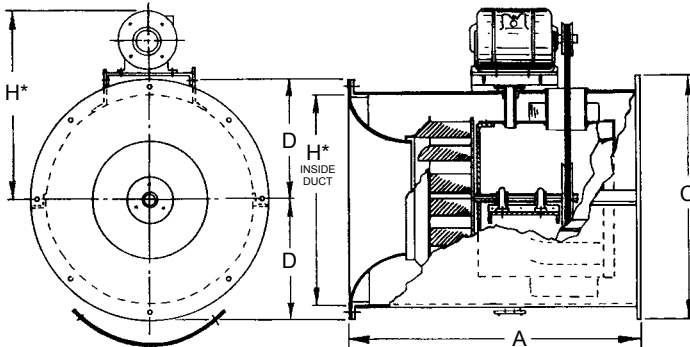
| RPM | FAN CAPACITY - CUBIC FEET PER MINUTE (CFM) | | | | | | | | | | | | | | | | | |
|------|--------------------------------------------|------|-------------|------|-------------|------|-------------|------|-------------|------|-------------|------|-------------|------|-------------|------|-------------|-----|
| | 1.250" S.P. | | 1.375" S.P. | | 1.500" S.P. | | 1.750" S.P. | | 1.875" S.P. | | 2.000" S.P. | | 2.250" S.P. | | 2.500" S.P. | | 2.750" S.P. | |
| | CFM | BHP | CFM | BHP | CFM | BHP | CFM | BHP | CFM | BHP | CFM | BHP | CFM | BHP | CFM | BHP | CFM | BHP |
| 900 | - | - | - | - | - | - | - | - | - | - | - | - | - | - | - | - | - | - |
| 965 | 2832 | 1.44 | 2232 | 1.28 | - | - | - | - | - | - | - | - | - | - | - | - | - | - |
| 1010 | 3427 | 1.75 | 2940 | 1.65 | 2373 | 1.48 | - | - | - | - | - | - | - | - | - | - | - | - |
| 1060 | 4039 | 2.10 | 3603 | 2.02 | 3143 | 1.92 | - | - | - | - | - | - | - | - | - | - | - | - |
| 1130 | 4770 | 2.59 | 4433 | 2.56 | 4045 | 2.49 | 3182 | 2.27 | 2668 | 2.08 | - | - | - | - | - | - | - | - |
| 1210 | 5547 | 3.23 | 5255 | 3.20 | 4940 | 3.16 | 4240 | 3.03 | 3858 | 2.94 | 3430 | 2.80 | - | - | - | - | - | - |
| 1300 | 6341 | 4.04 | 6094 | 4.02 | 5846 | 4.00 | 5264 | 3.92 | 4968 | 3.87 | 4612 | 3.78 | 3875 | 3.55 | 2986 | 3.12 | - | - |

Performance shown is for installation type A - Free inlet, Free outlet. Power rating (BHP) does not include drive losses. Performance ratings do not include the effects of appurtenances in the airstream. The AMCA Certified Ratings Seal applies to air capacities only.

Centrex REX

©PENNBARRY 2008

› REX27B Dimensional Data



› REX27B Dimensional References

| MODEL | A | B | C | D | E | F | H* | APPROXIMATE SHIP WEIGHT (LBS.) |
|--------|----|--------|--------|--------|--------|----|----|--------------------------------|
| REX27B | 36 | 40 1/2 | 43 1/4 | 21 5/8 | 46 3/4 | 24 | 41 | 325 |

*Maximum for open motors and highest HP available for that size. All dimensions in inches.

| WHEEL SIZE | INLET AND OUTLET | TIP SPEED |
|--------------------------------------------|------------------------------------------------------------|------------|
| Diameter = 30.50" Circumference = 7.98' | Inside Diameter = 40.50" Fan Outlet Area = 8.94 sq. ft. | 7.98 x RPM |

› REX27B Performance Data

| RPM | FAN CAPACITY - CUBIC FEET PER MINUTE (CFM) | | | | | | | | | | | | | | | | | | |
|------|--------------------------------------------|------|-------------|------|-------------|------|-------------|------|-------------|-------|-------------|-------|-------------|-------|-------------|-------|-------------|-------|---|
| | 0.125" S.P. | | 0.250" S.P. | | 0.375" S.P. | | 0.500" S.P. | | 0.625" S.P. | | 0.750" S.P. | | 0.875" S.P. | | 1.000" S.P. | | 1.125" S.P. | | |
| | CFM | BHP | CFM | BHP | CFM | BHP | CFM | BHP | CFM | BHP | CFM | BHP | CFM | BHP | CFM | BHP | CFM | BHP | |
| 445 | 5760 | 0.55 | 5080 | 0.57 | 4185 | 0.55 | 2430 | 0.42 | - | - | - | - | - | - | - | - | - | - | - |
| 505 | 6685 | 0.79 | 6170 | 0.83 | 5460 | 0.84 | 4595 | 0.79 | 3090 | 0.65 | - | - | - | - | - | - | - | - | - |
| 550 | 7375 | 1.01 | 6915 | 1.05 | 6315 | 1.08 | 5675 | 1.07 | 4715 | 0.99 | 3230 | 0.82 | - | - | - | - | - | - | - |
| 630 | 8570 | 1.51 | 8160 | 1.55 | 7755 | 1.60 | 7195 | 1.63 | 6660 | 1.61 | 5935 | 1.56 | 4910 | 1.42 | 3470 | 1.18 | - | - | - |
| 690 | 9455 | 1.97 | 9085 | 2.01 | 8710 | 2.07 | 8310 | 2.12 | 7775 | 2.14 | 7295 | 2.12 | 6640 | 2.05 | 5790 | 1.94 | 4705 | 1.75 | - |
| 790 | 10915 | 2.92 | 10610 | 3.00 | 10275 | 3.04 | 9975 | 3.12 | 9615 | 3.17 | 9155 | 3.20 | 8700 | 3.22 | 8280 | 3.17 | 7715 | 3.10 | - |
| 865 | 12005 | 3.82 | 11735 | 3.91 | 11430 | 3.96 | 11130 | 4.02 | 10860 | 4.11 | 10525 | 4.17 | 10105 | 4.19 | 9690 | 4.22 | 9270 | 4.25 | - |
| 940 | 13090 | 4.87 | 12845 | 4.99 | 12580 | 5.07 | 12295 | 5.11 | 12020 | 5.18 | 11775 | 5.28 | 11465 | 5.34 | 11115 | 5.39 | 10700 | 5.40 | - |
| 1005 | 14025 | 5.94 | 13800 | 6.06 | 13560 | 6.16 | 13295 | 6.21 | 13035 | 6.28 | 12780 | 6.35 | 12550 | 6.46 | 12260 | 6.53 | 11935 | 6.58 | - |
| 1075 | 15030 | 7.25 | 14820 | 7.38 | 14600 | 7.50 | 14370 | 7.59 | 14120 | 7.63 | 13880 | 7.70 | 13640 | 7.79 | 13430 | 7.91 | 13155 | 7.98 | - |
| 1130 | 15820 | 8.40 | 15625 | 8.55 | 15415 | 8.67 | 15200 | 8.78 | 14960 | 8.82 | 14730 | 8.89 | 14505 | 8.98 | 14275 | 9.07 | 14075 | 9.20 | - |
| 1180 | 16540 | 9.55 | 16350 | 9.71 | 16155 | 9.84 | 15950 | 9.96 | 15735 | 10.05 | 15505 | 10.08 | 15285 | 10.17 | 15065 | 10.26 | 14885 | 10.40 | - |

| RPM | FAN CAPACITY - CUBIC FEET PER MINUTE (CFM) | | | | | | | | | | | | | | | | | | | |
|------|--------------------------------------------|-------|-------------|-------|-------------|-------|-------------|-------|-------------|-------|-------------|-------|-------------|-------|-------------|-------|-------------|------|---|--|
| | 1.250" S.P. | | 1.375" S.P. | | 1.500" S.P. | | 1.750" S.P. | | 2.000" S.P. | | 2.250" S.P. | | 2.500" S.P. | | 2.750" S.P. | | 3.000" S.P. | | | |
| | CFM | BHP | CFM | BHP | CFM | BHP | CFM | BHP | CFM | BHP | CFM | BHP | CFM | BHP | CFM | BHP | CFM | BHP | | |
| 690 | 3680 | 1.53 | - | - | - | - | - | - | - | - | - | - | - | - | - | - | - | - | - | |
| 790 | 7030 | 2.99 | 6160 | 2.81 | 5140 | 2.56 | - | - | - | - | - | - | - | - | - | - | - | - | - | |
| 865 | 8870 | 4.14 | 8320 | 4.05 | 7690 | 3.93 | 6055 | 3.50 | 3590 | 2.63 | - | - | - | - | - | - | - | - | - | |
| 940 | 10320 | 5.44 | 9990 | 5.37 | 9550 | 5.30 | 8465 | 5.07 | 7070 | 4.67 | 4940 | 3.83 | - | - | - | - | - | - | - | |
| 1005 | 11545 | 6.59 | 11185 | 6.63 | 10825 | 6.66 | 10085 | 6.44 | 9055 | 6.20 | 7690 | 5.73 | 5935 | 5.00 | 2295 | 3.10 | - | - | - | |
| 1075 | 12860 | 8.04 | 12495 | 8.05 | 12160 | 8.09 | 11490 | 8.16 | 10795 | 7.89 | 9850 | 7.64 | 8635 | 7.18 | 7195 | 6.56 | 6325 | 6.13 | - | |
| 1130 | 13815 | 9.27 | 13530 | 9.33 | 13180 | 9.35 | 12545 | 9.42 | 11975 | 9.32 | 11210 | 9.12 | 10300 | 8.85 | 9140 | 8.37 | 7825 | 7.76 | - | |
| 1180 | 14655 | 10.49 | 14400 | 10.57 | 14130 | 10.63 | 13490 | 10.68 | 12880 | 10.76 | 12320 | 10.57 | 11555 | 10.34 | 10660 | 10.04 | 9540 | 9.53 | - | |

Performance shown is for installation type A - Free inlet, Free outlet. Power rating (BHP) does not include drive losses. Performance ratings do not include the effects of appurtenances in the airstream. The AMCA Certified Ratings Seal applies to air capacities only.

Dimensional Information & Performance Data

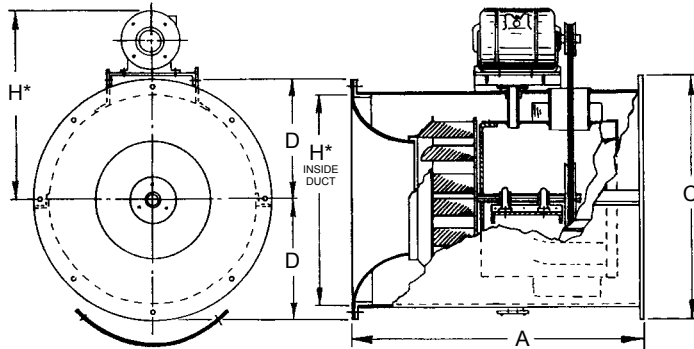
Centrex REX | Belt Drive



REX33B

REX33B Dimensional Data

Centrifugal Tubular Fans



REX33B Dimensional References

| MODEL | A | B | C | D | E | F | H* | APPROXIMATE SHIP WEIGHT (LBS.) |
|--------|----|--------|--------|--------|--------|--------|----|--------------------------------|
| REX33B | 38 | 49 1/2 | 52 3/4 | 26 3/8 | 53 1/4 | 27 1/8 | 46 | 525 |

*Maximum for open motors and highest HP available for that size. All dimensions in inches.

| WHEEL SIZE | INLET AND OUTLET | TIP SPEED |
|--------------------------------------------|-------------------------------------------------------------|------------|
| Diameter = 36.50" Circumference = 9.55' | Inside Diameter = 49.50" Fan Outlet Area = 13.36 sq. ft. | 9.55 x RPM |

REX33B Performance Data

| RPM | FAN CAPACITY - CUBIC FEET PER MINUTE (CFM) | | | | | | | | | | | | | | | | | |
|-----|--------------------------------------------|-------|-------------|-------|-------------|-------|-------------|-------|-------------|-------|-------------|-------|-------------|-------|-------------|-------|-------------|-------|
| | 0.125" S.P. | | 0.250" S.P. | | 0.375" S.P. | | 0.500" S.P. | | 0.625" S.P. | | 0.750" S.P. | | 0.875" S.P. | | 1.000" S.P. | | 1.125" S.P. | |
| | CFM | BHP | CFM | BHP | CFM | BHP | CFM | BHP | CFM | BHP | CFM | BHP | CFM | BHP | CFM | BHP | CFM | BHP |
| 485 | 10799 | 1.89 | 10067 | 1.96 | 9507 | 2.06 | 8915 | 2.10 | 8033 | 2.07 | 5573 | 1.64 | 720 | 0.58 | - | - | - | - |
| 515 | 11567 | 2.27 | 10850 | 2.33 | 10280 | 2.43 | 9787 | 2.50 | 9094 | 2.50 | 8146 | 2.45 | 5462 | 1.87 | - | - | - | - |
| 535 | 12078 | 2.55 | 11370 | 2.58 | 10800 | 2.70 | 10318 | 2.79 | 9740 | 2.82 | 8948 | 2.78 | 7207 | 2.42 | 3927 | 1.60 | - | - |
| 570 | 12964 | 3.09 | 12278 | 3.09 | 11705 | 3.20 | 11237 | 3.33 | 10781 | 3.43 | 10156 | 3.40 | 9345 | 3.35 | 7520 | 2.88 | 4455 | 2.02 |
| 600 | 13727 | 3.62 | 13056 | 3.59 | 12486 | 3.70 | 12008 | 3.84 | 11585 | 3.93 | 11101 | 3.99 | 10444 | 3.96 | 9621 | 3.88 | 7558 | 3.26 |
| 640 | 14743 | 4.39 | 14090 | 4.35 | 13529 | 4.46 | 13043 | 4.59 | 12627 | 4.70 | 12240 | 4.83 | 11745 | 4.91 | 11116 | 4.80 | 10320 | 4.70 |
| 710 | 16510 | 6.01 | 15890 | 5.95 | 15346 | 5.91 | 14867 | 6.10 | 14439 | 6.28 | 14063 | 6.37 | 13710 | 6.50 | 13324 | 6.83 | 12823 | 6.60 |
| 760 | 17774 | 7.40 | 17167 | 7.32 | 16641 | 7.30 | 16169 | 7.42 | 15739 | 7.58 | 15360 | 7.76 | 15012 | 7.89 | 14682 | 7.99 | 14330 | 8.14 |
| 805 | 18910 | 8.81 | 18306 | 8.70 | 17803 | 8.65 | 17336 | 8.74 | 16913 | 8.82 | 16524 | 9.08 | 16179 | 9.24 | 15864 | 9.38 | 15543 | 9.50 |
| 850 | 20043 | 10.39 | 19450 | 10.27 | 18959 | 10.21 | 18502 | 10.25 | 18084 | 10.36 | 17696 | 10.55 | 17341 | 10.75 | 17021 | 10.91 | 16726 | 11.06 |
| 885 | 20924 | 11.74 | 20339 | 11.60 | 19856 | 11.54 | 19470 | 11.54 | 18992 | 11.60 | 18610 | 11.78 | 18251 | 11.99 | 17929 | 12.20 | 17624 | 12.37 |
| 930 | 22054 | 13.65 | 21481 | 13.48 | 21005 | 13.39 | 20569 | 13.34 | 20159 | 13.36 | 19781 | 13.58 | 19425 | 13.80 | 19092 | 13.98 | 18792 | 14.19 |

| RPM | FAN CAPACITY - CUBIC FEET PER MINUTE (CFM) | | | | | | | | | | | | | | | | | |
|-----|--------------------------------------------|-------|-------------|-------|-------------|-------|-------------|-------|-------------|-------|-------------|-------|-------------|-------|-------------|-------|-------------|------|
| | 1.250" S.P. | | 1.375" S.P. | | 1.500" S.P. | | 1.750" S.P. | | 2.000" S.P. | | 2.250" S.P. | | 2.500" S.P. | | 2.750" S.P. | | 3.000" S.P. | |
| | CFM | BHP | CFM | BHP | CFM | BHP | CFM | BHP | CFM | BHP | CFM | BHP | CFM | BHP | CFM | BHP | CFM | BHP |
| 600 | 4600 | 2.33 | - | - | - | - | - | - | - | - | - | - | - | - | - | - | - | - |
| 640 | 8662 | 4.16 | 6264 | 3.42 | 2138 | 1.78 | - | - | - | - | - | - | - | - | - | - | - | - |
| 710 | 12236 | 6.55 | 11515 | 6.44 | 10297 | 6.04 | 5451 | 3.86 | - | - | - | - | - | - | - | - | - | - |
| 760 | 13881 | 8.09 | 13360 | 8.05 | 12789 | 7.98 | 10432 | 7.07 | 5954 | 4.80 | - | - | - | - | - | - | - | - |
| 805 | 15214 | 10.15 | 14806 | 10.33 | 14326 | 9.59 | 13165 | 9.42 | 10630 | 8.12 | 6145 | 5.60 | - | - | - | - | - | - |
| 850 | 16423 | 11.19 | 16119 | 11.29 | 15774 | 11.35 | 14820 | 11.25 | 13675 | 11.03 | 10792 | 9.30 | 6608 | 6.69 | - | - | - | - |
| 885 | 17345 | 12.48 | 17052 | 12.63 | 16757 | 12.74 | 15976 | 12.76 | 15050 | 12.63 | 13640 | 12.26 | 10556 | 10.19 | 6177 | 7.02 | - | - |
| 930 | 18504 | 14.35 | 18238 | 14.45 | 17960 | 14.59 | 17357 | 14.86 | 16559 | 14.78 | 15635 | 14.62 | 14191 | 14.17 | 11149 | 11.85 | 7160 | 8.70 |

Performance shown is for installation type A - Free inlet, Free outlet. Power rating (BHP) does not include drive losses. Performance ratings do not include the effects of appurtenances in the airstream. The AMCA Certified Ratings Seal applies to air capacities only.

Centrex REX

©PENNBARRY 2008

Engineering Specifications & Configurations

Centrifugal Tubular Fans

Centrex REX

› Model

REX = TUBULAR FAN

› Unit Size

| | | | |
|----|----|----|----|
| 08 | 12 | 20 | 27 |
| 10 | 14 | 22 | 33 |

› Drive Type

D = Direct B = Belt

› Motor Tap

V = 1050 RPM R = 1550 RPM
T = 1140 RPM Q = 1750 RPM

› Motor Speed

1 = Single Speed
2 = 2S2W 1800/1200
3 = 2S1W 1800/300

› Horse Power

| | | | | |
|------|-----|-------|---|-------|
| 1/25 | 1/4 | 3/4 | 2 | 7 1/2 |
| 1/12 | 1/3 | 1 | 3 | 10 |
| 1/6 | 1/2 | 1 1/2 | 5 | 15 |

› Enclosure

O = Open Drip Proof X = Special
T = Totally Enclosed E = Explosion Proof

› Voltage

| | | |
|----------|----------|----------|
| A = 110V | G = 230V | N = 440V |
| B = 115V | H = 240V | P = 460V |
| C = 120V | J = 277V | Q = 480V |
| D = 200V | K = 380V | R = 575V |
| E = 208V | L = 400V | S = 600V |
| F = 220V | M = 415V | |

› Phase

1 = Single 3 = Three

› Cycle

5 = 50 Hz 6 = 60 Hz

› Efficiency

S = Standard H = High Efficiency

› Paint / Coating

0 = None
F = Epoxy Powder Coat*
G = Epoxy Powder Coat with UV*
H = Hi-Temp Powder Coat*
J = Non-Stick Powder Coat*
K = Phenolic Powder Coat*
L = Phenolic Powder Coat with UV*
N = Polyester Powder Coat
X = Special
** Not available with choice of color.*

› Color

| | |
|-------------------|--------------------|
| 0 = None | 00 = Standard Gray |
| 50 = Chrome Green | 53 = Will. Blue |
| 55 = Pale Green | 56 = Dove Gray |
| 61 = White | 63 = Oxford Beige |

| | |
|----------------------|------------------|
| 65 = Dover White | 66 = Desert Tan |
| 70 = Black | 73 = Smoke Gray |
| 77 = Brick Red | 79 = Peppercorn |
| 81 = Pale Brown | 83 = Choc. Brown |
| 85 = Timeless Bronze | X = Special |
| 94 = Charcoal | |

› Damper

0 = None BDD = Backdraft Damper

› Casing Bracket

0 = None B = Bracket

› Motor Bracket

0 = None M = Motor

› Companion Angle Ring

0 = None R = Ring

› Inlet Guard

0 = None G = Guard

› Support Legs

0 = None L = Leg

› Lube Lines

0 = None L = Lube Lines

› Zerk Lube Fitting

0 = None F = Fitting

› Vibration Isolation

0 = None
RF = Run in Shear Floor
RH = Rub in Shear Hanger
SF = Spring Floor
SH = Spring Hanger

› Thermal Protection

0 = None P = Thermal Protection

› Disconnect Switch

0 = None
1 = NEMA 1
3R = NEMA 3R Disconnect Switch
4 = NEMA 4 Disconnect Switch
7 = NEMA 7 Disconnect Switch
9 = NEMA 9 Disconnect Switch
X = Special

› Internal Wiring

0 = None
3R = NEMA 3R Internal Wiring
4 = NEMA 4 Internal Wiring
X = Special

› Speed Controller

0 = None L = Loose M = Mounted

› Firestat Switch

0 = None S = Switch

› Centrex REX Direct Drive Fans

Direct drive centrifugal round inline fan shall be Centrex REX, manufactured by PennBarry, Richardson, Texas 75081.

The fan housing shall be aluminum have connecting flanges as an integral part of the unit for easy attachment to the duct work or connector. Fans shall incorporate a gasketed access panel. All moving parts shall be provided with vibration isolation.

Statically and dynamically balanced backward inclined, centrifugal wheels shall be aluminum, spark-resistant, non-overloading, and riveted or riveted and welded. Wheels shall be matched to deeply spun venturis. Motors shall be continuous duty, permanently lubricated, mounted out of the main airstream, and furnished at the specified voltage, phase.

Each fan shall bear the AMCA Licensed Ratings Seal for Air Performance, and shall be CSA listed.

› Centrex REX Belt Drive Fans

Belt driven centrifugal round inline fan shall be Centrex REX, manufactured by PennBarry, Richardson, Texas 75081.

The housing shall be aluminum and have connecting flanges as an integral part of the unit for easy attachment to the duct work or connector. Fans shall incorporate a gasketed access panel. All moving parts shall be provided with vibration isolation.

Statically and dynamically balanced backward inclined, centrifugal wheels shall be aluminum, spark-resistant, non-overloading, and matched to deeply spun venturis. Motors shall be continuous duty, ball bearing design, permanently lubricated, mounted out of the main airstream and furnished at the specified voltage, phase and enclosure. Shafts shall be turned, ground, and polished. Pulleys shall be adjustable, cast iron, machined, keyed, securely attached and sized for 150% of the horsepower at its rated maximum speed.

Each fan shall bear the AMCA Licensed Ratings Seal for Air Performance and shall be CSA listed.

1-Year Limited Manufacturer Warranty

Centrifugal Tubular Fans

› Products Covered

PennBarry Fans and Ventilators (each, a “PennBarry Product”)

› One Year Limited Warranty For PennBarry Products

PennBarry warrants to the original commercial purchaser that the PennBarry Products will be free from defects in material and workmanship for a period of one (1) year from the date of shipment.

› Exclusive Remedy

PennBarry will, at its option, repair or replace (without removal or installation) the affected components of any defective PennBarry Product; repair or replace (without removal or installation) the entire defective PennBarry Product; or refund the invoice price of the PennBarry Product. In all cases, a reasonable time period must be allowed for warranty repairs to be completed.

› What You Must Do

In order to make a claim under these warranties:

- You must be the original commercial purchaser of the PennBarry Product.
- You must promptly notify us, within the warranty period, of any defect and provide us with any substantiation that we may reasonably request.
- The PennBarry Product must have been installed and maintained in accordance with good industry practice and any specific PennBarry recommendations.

› Exclusions

These warranties do not cover defects caused by:

- Improper design or operation of the system into which the PennBarry Product is incorporated.
- Improper installation.
- Accident, abuse or misuse.
- Unreasonable use (including any use for non-commercial purposes, failure to provide reasonable and necessary maintenance as specified by PennBarry, misapplication and operation in excess of stated performance characteristics).
- Components not manufactured by PennBarry.

› Limitations

- In all cases, PennBarry reserves the right to fully satisfy its obligations under the Limited Warranties by refunding the invoice price of the defective PennBarry Product (or, if the PennBarry Product has been discontinued, of the most nearly comparable current product).
- PennBarry reserves the right to furnish a substitute or replacement component or product in the event a PennBarry Product or any component of the product is discontinued or otherwise unavailable.
- PennBarry’s only obligation with respect to components not manufactured by PennBarry shall be to pass through the warranty made by the manufacturer of the defective component.

› General

The foregoing warranties are exclusive and in lieu of all other warranties except that of title, whether written, oral or implied, in fact or in law (including any warranty of merchantability or fitness for a particular purpose).

PennBarry hereby disclaims any liability for special, punitive, indirect, incidental or consequential damages, including without limitation lost profits or revenues, loss of use of equipment, cost of capital, cost of substitute products, facilities or services, downtime, shutdown or slowdown costs.

The remedies of the original commercial purchaser set forth herein are exclusive and the liability of PennBarry with respect to the PennBarry Products, whether in contract, tort, warranty, strict liability or other legal theory shall not exceed the invoice price charged by PennBarry to its customer for the affected PennBarry Product at the time the claim is made.

*Inquiries regarding these warranties should be sent to: PennBarry,
1401 North Plano Road, Richardson, TX 75081*

C
e
n
t
r
e
x

R
E
X

Other PennBarry Products

Centrifugal Products



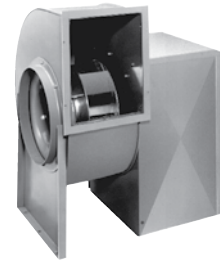
› **Domex**
Centrifugal
Roof Exhausters



› **Fumex Fatrap**
Kitchen Hood Centrifugal
Roof Exhausters



› **Zephyr**
Ceiling and Inline Fans



› **Dynamo**
Centrifugal Blowers



› **Centrex Inliner**
Centrifugal Inline Fan



› **LC Dynafan**
Low Contour Centrifugal
Roof Exhausters

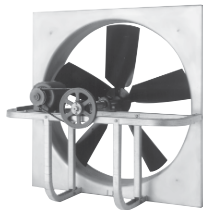


› **ESI**
Efficient Silent
Inline Fan



› **Fume Exhaust**
Curb Mounted
Centrifugal Fans

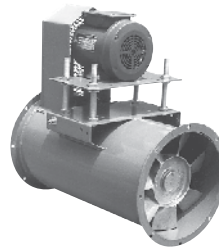
Axial / Gravity Products



› **Breezeway**
Propeller Wall Fan



› **Hi-Ex**
Power Roof Ventilator



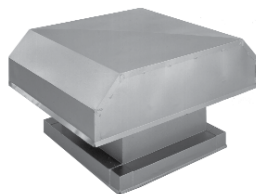
› **Tubeaxial**
Inline Fans



› **Vaneaxial**
Inline Fans



› **Powered Airette**
Axial Roof Ventilators



› **Airette**
Gravity Intake/Relief Hood



› **Domex Axial**
Axial Roof Ventilators



› **Axcentrix**
Bifurcator Fan

